

# Case Study: Downsview Park



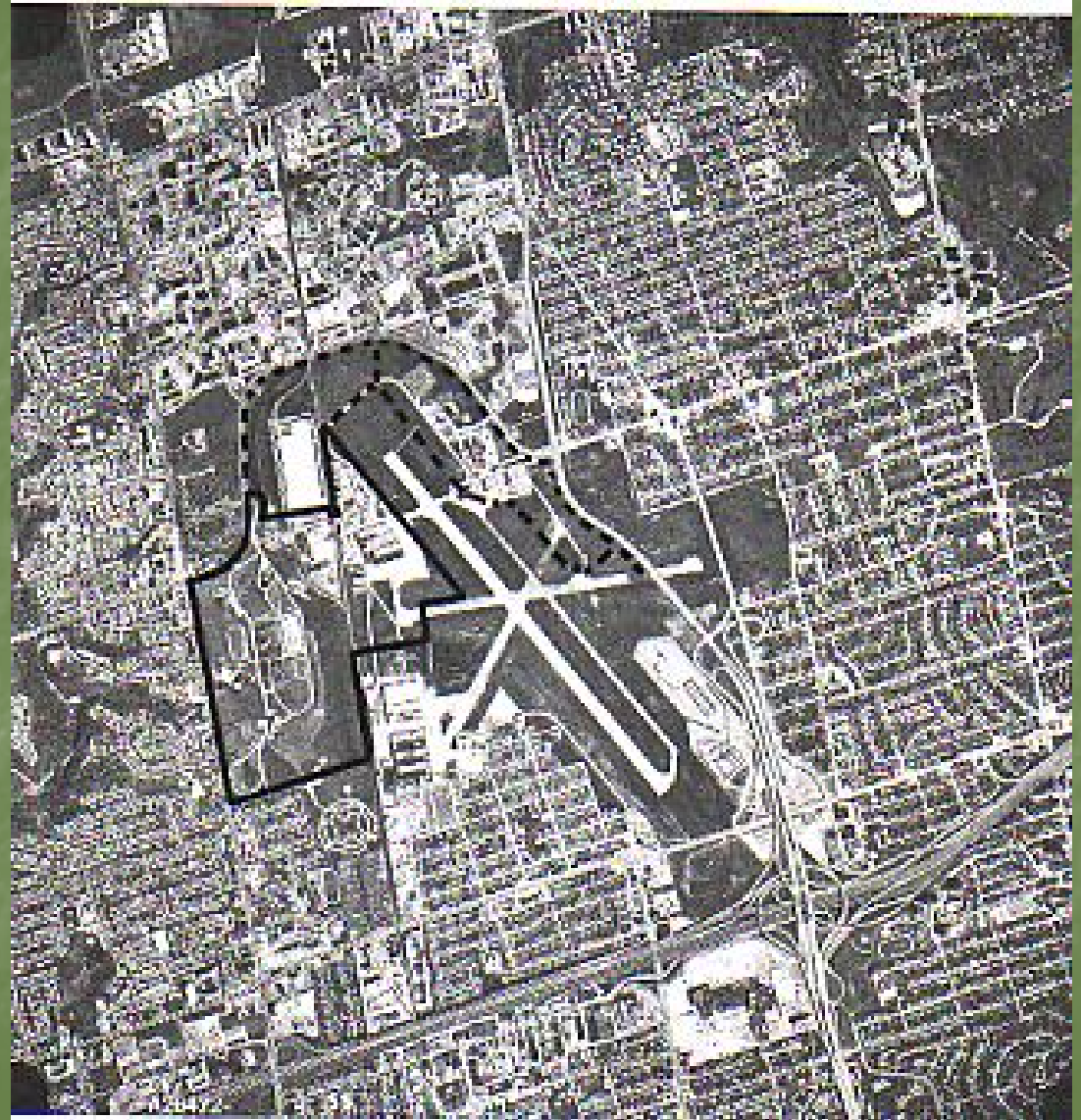
# The Downsview Park Lands

- Former National military base



# The Downsview Park Lands

- 600 acres in the geographic centre of the GTA



# The Downsview Park Lands

- Timeline:
  - 1994: Military base closed
  - 1998: Federal Government designates 320 acres of the 600 acre site as "Canada's First National Urban Park"
  - A Crown Corporation, Parc Downsview Park Inc., was established to manage development of the Downsview Park Lands
  - 1999: an international competition to design the park was launched
  - 2000: The "Tree City" design was selected
  - 2005: Construction of the park has yet to begin



# "Tree City" Design

- A framework to guide the evolution of the park over time
- Organic design process



# “Tree City” Design

- “It’s about designing it to be changed, designing it to be evolving, but to make the design so robust that it sustains itself through that evolution—like any other living thing”
  - Bruce Mau, OMA design team

# "Tree City" Design

- "Action Zone"
- "Promenade"
- "Cultivation Campus"
- 1000 Pathways
- "Planted Clusters"
- 25% "tree clusters"
- Meadows
- Gardens
- playing fields
- a lake





# Argument

- The plan for Downsview Park provides a framework for the construction of a post-modern park that is socially and environmentally sustainable
- **HOWEVER**, the feasibility of the plan is questionable from a political and economic standpoint.

# Social Sustainability

- Accommodate social change
- Community consultation and decision-making
- Create a sense of place and identity
- A diversity of uses

# Environmental Sustainability

- Inaugurate and adapt to ecological processes
- Create and support biodiversity
- Create sense of place and identity based on the natural environment

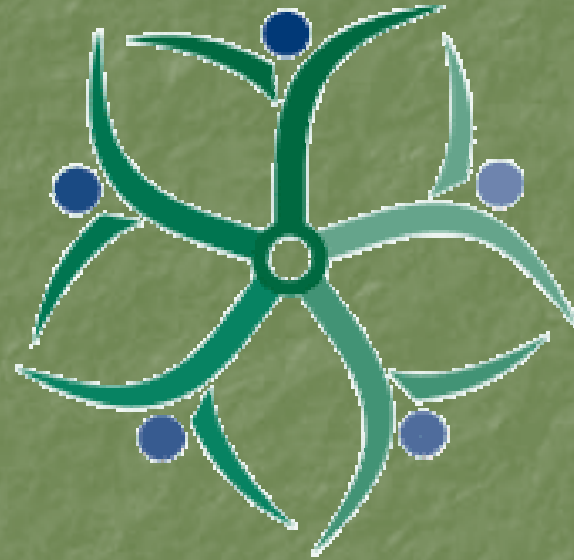
# Environmental Sustainability

- Linking Don and Humber River Watersheds



# Political Stagnation

- Bottom-up planning
- Democratic processes



Parc Downsview Park

Canada

# Financial Instability

- Economic sustainability?
- No viable long term financial plan to support the “Tree City” design



# Discussion

- Is this post-modern design and approach to implementing the park plan feasible, or would a modernist approach be more effective?